

KALI SULPHURICUM

In arabic “KALI” means “ASH”.

Other name potash means woodashes and burnt vegetable matter.

Its an alkaline substance.

Periodic Table of the Elements

Periodic Table of the Elements

hydrogen

alkali metals

alkali earth metals

transition metals

poor metals

nonmetals

noble gases

rare earth metals

| | | | | | | | | | | | | | | | | | | | | | |
|----------|----------|----------|------------|------------|------------|------------|------------|------------|------------|----------|----------|----------|----------|----------|----------|----------|----------|---------|---------|----------|----------|
| 1 H | | | | | | | | | | | | | | | | | 2 He | | | | |
| 3 Li | 4 Be | | | | | | | | | | | | | | | 5 B | 6 C | 7 N | 8 O | 9 F | 10 Ne |
| 11 Na | 12 Mg | | | | | | | | | | | | | | | 13 Al | 14 Si | 15 P | 16 S | 17 Cl | 18 Ar |
| 19 K | 20 Ca | 21 Sc | 22 Ti | 23 V | 24 Cr | 25 Mn | 26 Fe | 27 Co | 28 Ni | 29 Cu | 30 Zn | 31 Ga | 32 Ge | 33 As | 34 Se | 35 Br | 36 Kr | | | | |
| 37 Rb | 38 Sr | 39 Y | 40 Zr | 41 Nb | 42 Mo | 43 Tc | 44 Ru | 45 Rh | 46 Pd | 47 Ag | 48 Cd | 49 In | 50 Sn | 51 Sb | 52 Te | 53 I | 54 Xe | | | | |
| 55 Cs | 56 Ba | 57 La | 72 Hf | 73 Ta | 74 W | 75 Re | 76 Os | 77 Ir | 78 Pt | 79 Au | 80 Hg | 81 Tl | 82 Pb | 83 Bi | 84 Po | 85 At | 86 Rn | | | | |
| 87 Fr | 88 Ra | 89 Ac | 104 Unq | 105 Unp | 106 Unh | 107 Uns | 108 Uno | 109 Une | 110 Unn | | | | | | | | | | | | |

- hydrogen
- alkali metals
- alkali earth metals
- transition metals
- poor metals
- nonmetals
- noble gases
- rare earth metals

| | | | | | | | | | | | | | |
|----------|----------|----------|----------|----------|----------|----------|----------|----------|----------|-----------|-----------|-----------|-----------|
| 58 Ce | 59 Pr | 60 Nd | 61 Pm | 62 Sm | 63 Eu | 64 Gd | 65 Tb | 66 Dy | 67 Ho | 68 Er | 69 Tm | 70 Yb | 71 Lu |
| 90 Th | 91 Pa | 92 U | 93 Np | 94 Pu | 95 Am | 96 Cm | 97 Bk | 98 Cf | 99 Es | 100 Fm | 101 Md | 102 No | 103 Lr |

- Symbol: K
- Atomic no: 19
- Group: 1a

uses

- Gunpowder
- Fertilizer
- Photoelectric cells

hypokalaemia

- Impaired contractibility of the heart muscle.
- Necrosis of the heart muscles.
- Kidney hypertrophy
- Growth retardation
- Loss of hair
- Impaired muscular functioning with weakness.

hyperkalaemia

- Cardiac toxicity
- Cardiac block

- Kali aceticum
- Kali arsenicosum
- Kali bichromicum
- Kali bromatum
- Kali cyanatum
- Kali carbonicum
- Kali phosphoricum
- Kali sulphuratum
- Kali sulphurosum
- Kali metallicum
- Kali muriaticum

characteristic

- Constitution:

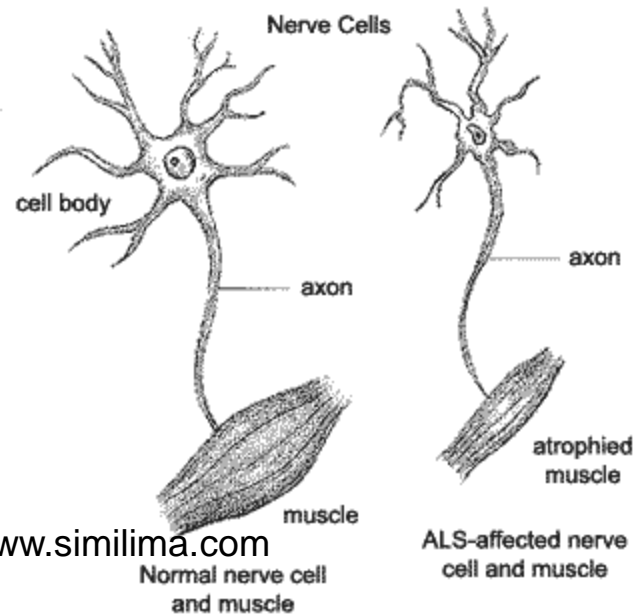
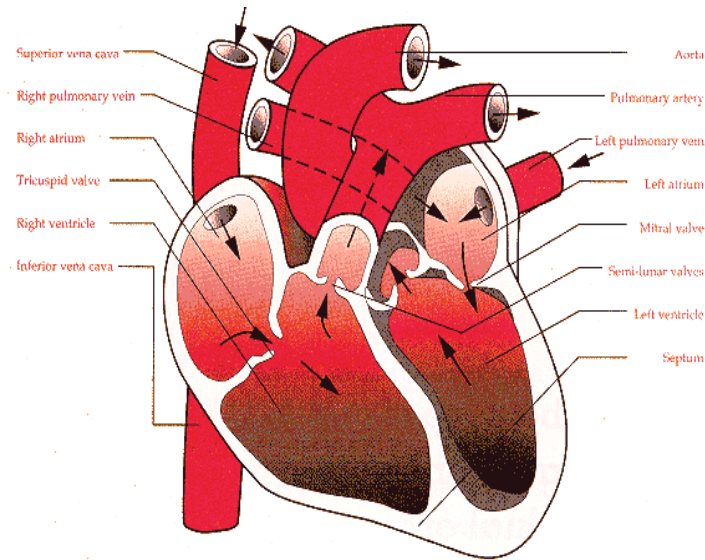
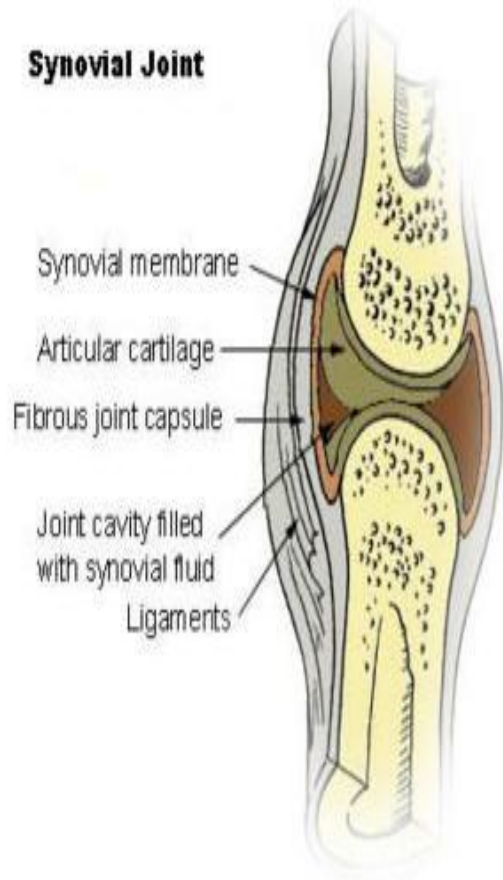
stout, robust with blue rings around the eyes (tendency to gain weight)



- Temperament: phlegmatic
- Thermals: chilly
- Diathesis: rheumatic and gouty
- Maism: sycotic
- Sphere of action:

Sphere of action:

Synovial Joint



- muscles
- Nerves
- Git
- Skin
- Hair
- Mucus glands
- Bones
- respiratory

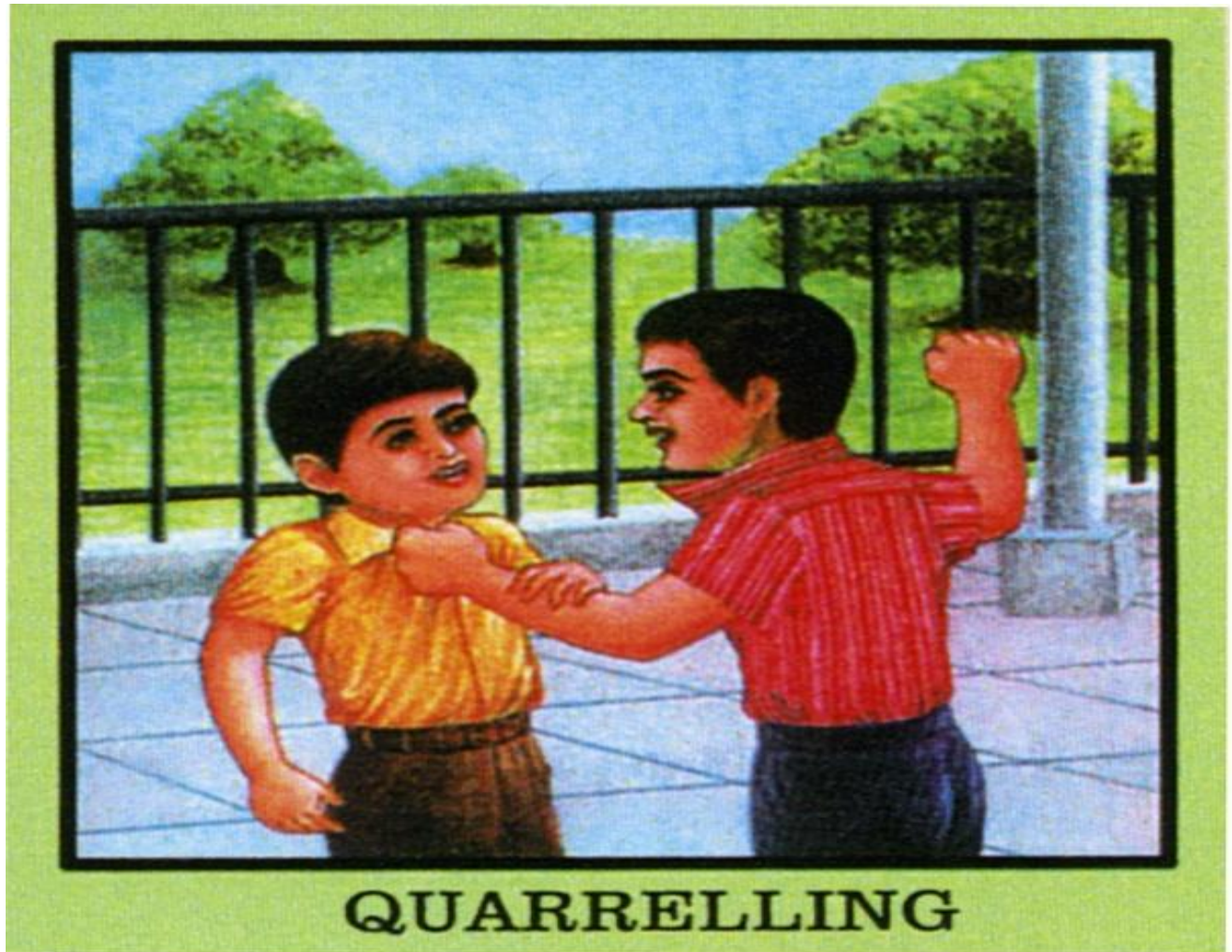
Characteristic mentals

- Oversensitive
- Fearful at night, fear of crowds, bad news, being alone.

Anxiety on waking, of future, disease



quarrelsome

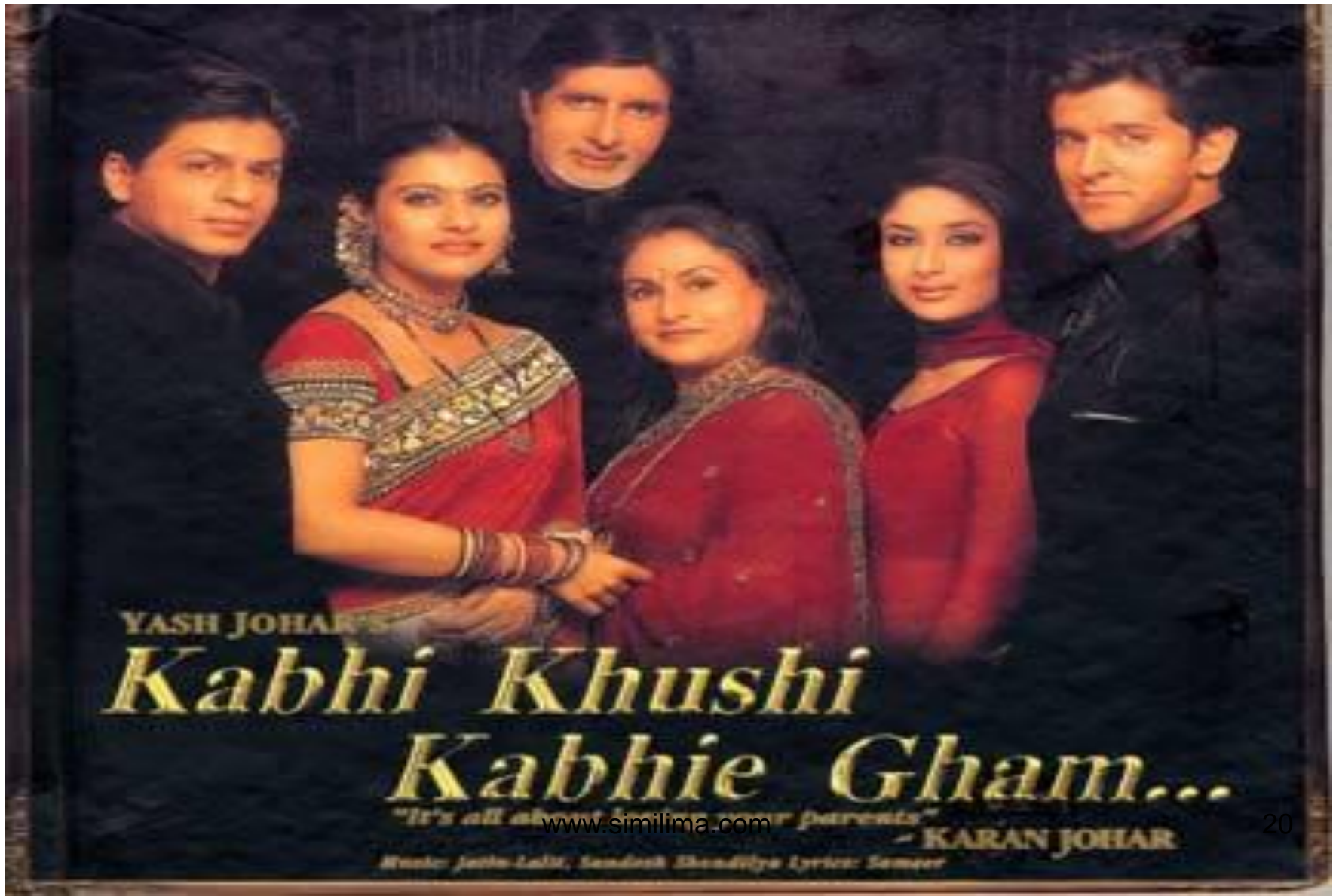


- Dullness: cant remember past events,absent minded.
- Indifferent: pleasure, business.
- Restlessness: evening,during menses,headache.
- Moaning mania
- Sleeping tendency:illusions of dead people.
- Impulsive:to kill
- Duty oriented
- Down to earth,than ego
- No artistic traits



- **Closed** type;they hold on things,closed and reserved, constipation.
- **Optimistic**:they cant share easily,they achieve what they want through perseverance and hard work.

Family oriented



YASH JOHAR'S
*Kabhi Khushi
Kabhie Gham...*

"It's all about love and parents"

www.similima.com

- KARAN JOHAR

Music: Jatin-Lalit, Sandesh Khanchikar Lyrics: Sameer

Profession



I'M A HANDS-ON MANAGER.



physicals

- Twitching and trembling of muscles
- Stitiching pains
- Joints: painful , swollen, tender
- Discharges :copious, thick, yellow
- Desire for sweets
- Heart affections:palpitations,attacks
- Asthma <3am,> sitting, <lying
- Backache with sciatica<pressure,lying on painful side,<menses.
- Latter stages of inflammation.

generals

- <thinking, cold,touch, exertion,menses
- >movement, leaning , eating.

clinical

- Asthma
- Epilepsy
- Sciatica
- Hypertension
- Sinusitis
- Anaemia
- pneumonia

Kali sulphuricum

- Potassium sulphate

mentals

- Feeling of insult and disgrace from family members or group whose support he seeks.
- So constantly he puts effort to win self esteem, respect he wants to rise his value in front of them.
- Industrious, supporting, caring for group, he has his own opinion, not dependent, same time angry on family members

- At this becomes discouraged, develops lack of confidence, easily offended
- Aversion to business, indifferent.

physicals

- Hot patient
- Respiratory: asthma, with yellow expectoration, Cough <evening.
- Craving for sweet
- Nasal polyps
- metrorrhagia
- Yellow coated tongue
- Piles



skin

- Intertigo
- Eczema
- Nettle rash
- Epithelioma
- Seborrhoea
- Favus
- Psoriasis
- Ring worm of scalp.

